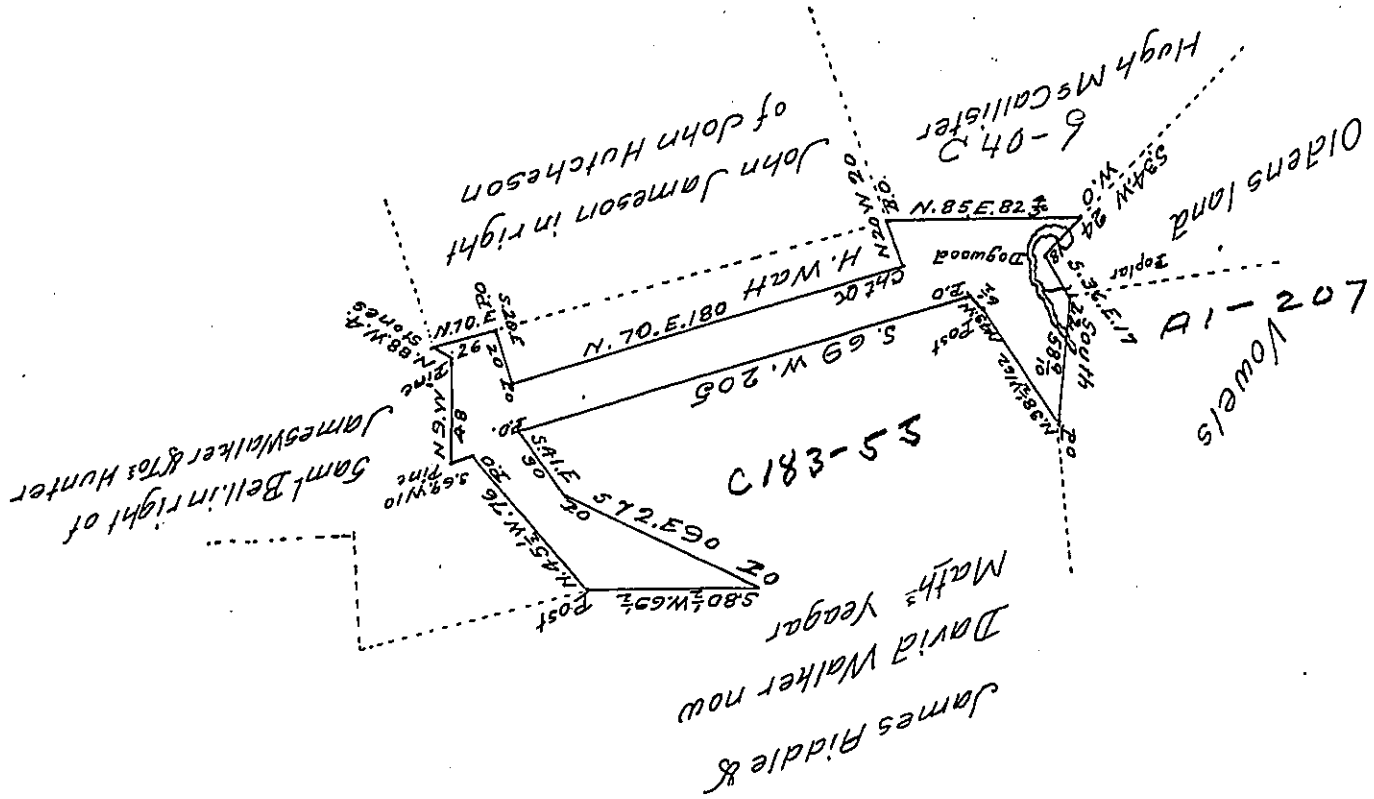


Note-The line bearing S.34.W.  
runs through a Dam made  
to raise water into a Sawmill race



A draught of sixty nine acres and seventy two perches of land  
with six per Cent for roads. Situate in Fermanagh township  
in Mifflin County Surveyed 23<sup>rd</sup> May 1811 in pursuance of a  
warrant to Matthias Yegar dated 18<sup>th</sup> April A.D. 1811.  
Improvement at time of Survey at least an acre of land clea-  
red, under fence and in a state of cultivation, and a house on  
the same and a man living in it

Michael M. Monahan D.S.

To Andrew Porter Esquire  
Surveyor General of Pennsylvania

IN TESTIMONY that the above is a copy of the original remaining on file in  
the Department of Internal Affairs of Pennsylvania, made  
comformably to an Act of Assembly approved the 16th day of  
February 1833, I have hereunto set my hand and caused  
the Seal of said Department to be affixed at Harrisburg,  
this twenty-first day of August 1907

*Nearg Houck*  
Secretary of Internal Affairs.